

**THERE IS NOTHING MORE
POWERFUL THAN THE
COMPLETE PICTURE**



**Manufacturing
Execution Systems**

Real-Time Machine Data Acquisition



We Bring the Complete Picture Into Focus

PLANT PERFORMANCE

Proactive quality management and improved equipment and plant performance begin with accurate real-time information. With reliable data at your fingertips, you have the tools needed to integrate the business function of manufacturing, sales, customer service, maintenance and finance.

PRODUCTIVITY

Your goal is to find ways to get more out of your existing resources. Lean manufacturing requires reducing lead time, decreasing scrap, eliminating downtime and maintaining accurate inventories while improving margins, creating greater value for your customers and a competitive advantage for your company. PlantStar's user-friendly measurement tools include:

- Production counts and reports
- Scrap entry and analysis
- Up/downtime tracking
- Material usage and forecasts
- Job data storage and retrieval
- Tool tracking
- Predictive maintenance
- Machine efficiency/utilization

PROCESS EFFICIENCIES

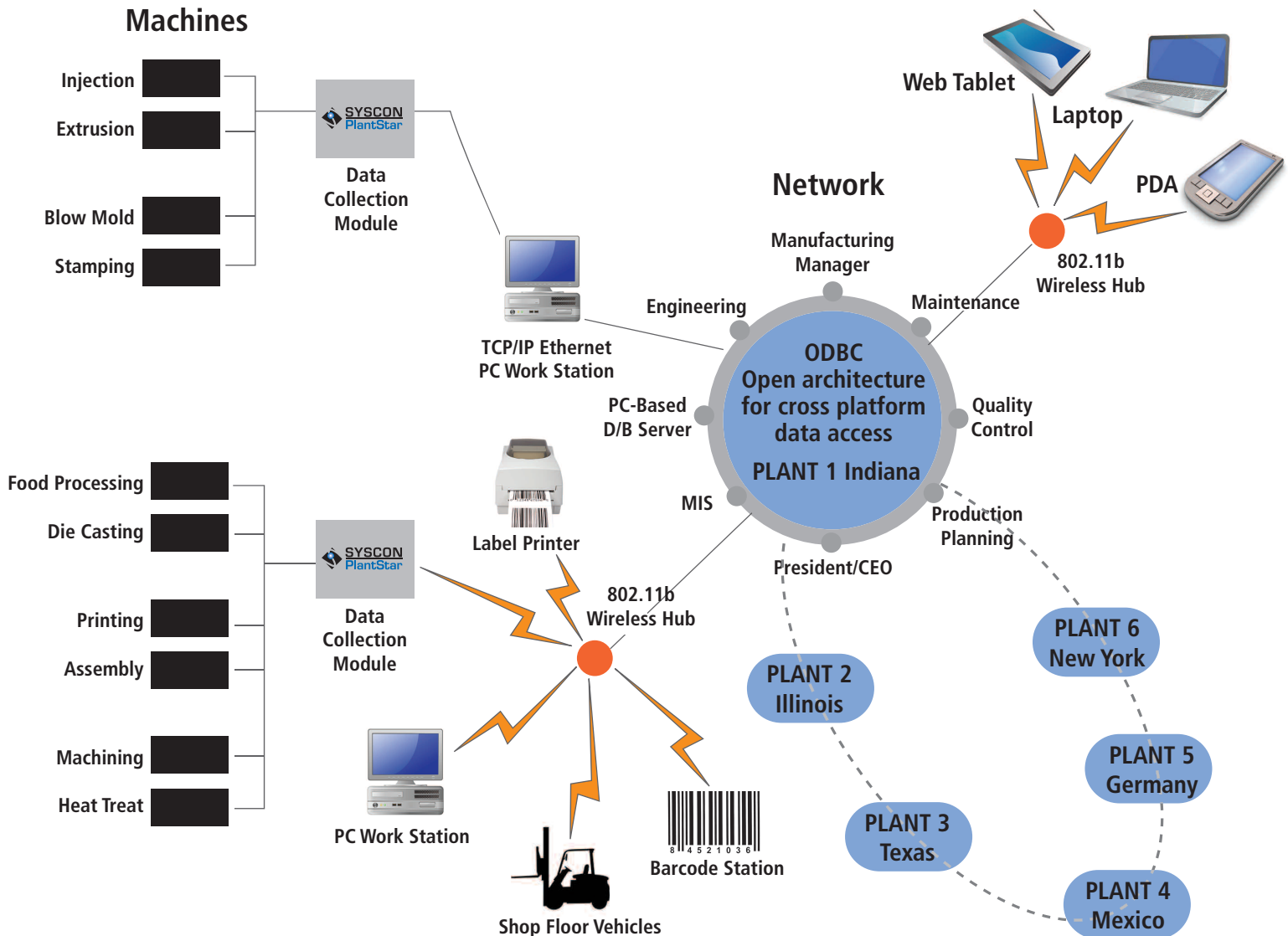
We'll help you achieve defect *prevention*, not defect *detection*. We accomplish this by tracking, recording and analyzing critical variables in real time with these process tools:

- SPC analysis
- High-speed profiling
- ISO/QS 9000 documentation
- X-Bar and R charts
- Temperatures, pressures, times, etc.
- OPC Support
- Dimensions, weights, and attributes
- Custom Interfaces
- Automatic machine setup data downloads

COMMUNICATION

Our solutions provide setup, quality, maintenance and operational documents where the operator needs them—on the machine. Operators can see images of good/bad parts or CAD drawings on every PC workstation and plant floor display. Management can share digital documents, video clips and demonstrations with the plant floor. You'll eliminate clipboards, whiteboards, notebooks and reams of outdated paper instructions. Paperless communication is now a reality.

The Integration of Our Solutions Into Your Work Environment



The SYSCON-PlantStar Suite of Visionary Software

Quickshot™

An entry-level, “real-time” production monitoring/scheduling system with multiple first-time user benefits including low cost and high value.

Snapshot®

This mid-entry level solution has all the features of Quickshot and provides interfaces for product control add-ons such as production scales, on-demand user-designed barcode label printing, electronic set-up sheets, family tooling and lot tracking functions.

Screenshots

Portrait®

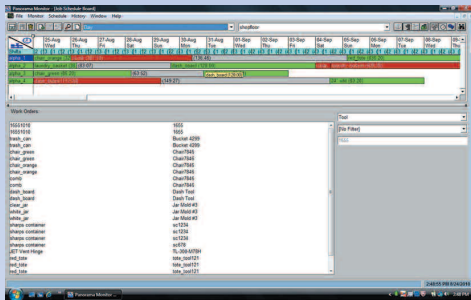
For manufacturers that need high-performance production and process monitoring without a large system implementation expense. Portrait offers enhanced real-time production scheduling and reporting along with fundamental process monitoring.

Panorama®

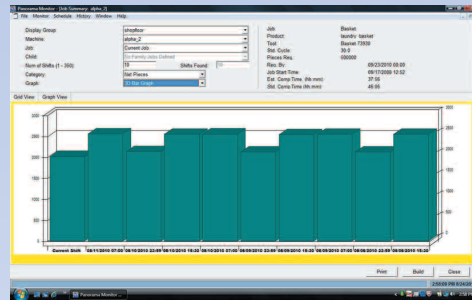
Panorama is a high-performance production solution that provides full traceability functions with optional multi-operational processing and data collection. Key attributes are the historian and online process journaling features.

Process Data Acquisition Module

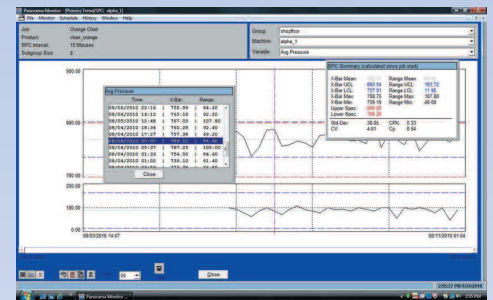
PDAM is a real-time process data acquisition and analysis tool designed for use by end users, process engineering, system developers and integrators. The PDAM is ideal for manufacturing environments that require real-time process information on their production equipment. Food, chemical, pharmaceutical and foundry applications can utilize the flexibility and reliability of the PDAM.



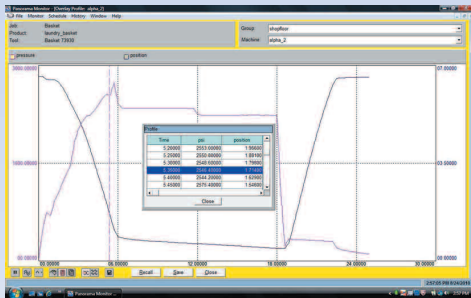
Job Schedule Board



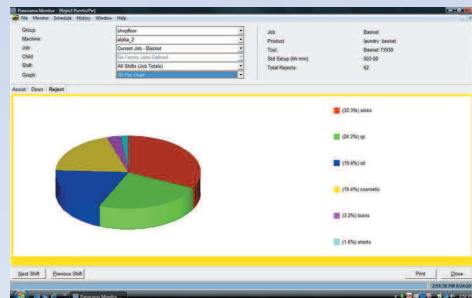
Job Summary



Process SPC



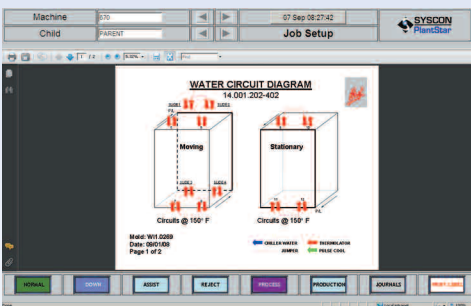
Profile Overlay



Reject Pie Chart



Tool Change Schedule



Job Set-Up



Job Summary



Reject Update



A Closer Look at the PlantStar Difference

A PROVEN TRACK RECORD

SYSCON-PlantStar, a division of SYSCON International, Inc., was established in 1988 to provide real-time plant floor data acquisition solutions to the plastics molding industry. PlantStar has installations in plastics, metal stamping, die casting, packaging, assembly and other related industries including:

- home appliances,
- contract medical devices,
- single-use food and beverage products,
- personal hygiene products including safety razors,
- world's largest automotive supplier,
- industrial plastic blow-molded products,
- world's leading manufacturer of safety products,
- plastic bottles for pharmaceutical and healthcare,
- and many more.

Ask for a client list.

FLEXIBLE AND RELIABLE HARDWARE

SYSCON-PlantStar's Data Collection Modules (DCMs) show the complete picture of your manufacturing processes. The DCM's web-enabled, industrial-grade touch screens have flexible configurations. Pentium-class microprocessors provide rapid data processing and communication. DCM units also provide extended shop floor redundancy and data protection in case of power or network failure.

WE WILL STAY WITH YOU WHILE YOU GROW

Our progressive suite of products will continue to meet your needs as your company expands and each product can be customized to address unique applications.

OUR RESEARCH AND DEVELOPMENT ARE SECOND TO NONE

This is where PlantStar really shines. Our research and development team never stops—we take advantage of every innovation that will help our clients make products better, faster, and more profitably. Many of these innovations come from listening to our clients when they want to expand their SYSCON-PlantStar products to meet the growing demands of their market.

SUPERIOR ENGINEERING SUPPORT

PlantStar's application engineers have the experience and resources to analyze and design a solution that fits your particular needs. After the installation, as easy-to-use as our products are, questions will come up. PlantStar's application engineers will keep your system running smoothly. We can work online via virtual private network, modem, and web connections to analyze your installation immediately. On-site assistance is available, too.

OUR SOLUTIONS PAY FOR THEMSELVES FASTER

In addition to the initial cost of the system, many factors determine the rate of return on investment. Our accurate analysis of needs and processes, seamless installation, operator training, and product's ease-of-use quickly turn your installation into an asset.

Where are the blind spots on your plant floor?

Call us today to schedule an on-site workflow analysis of your facility and a demonstration of the PlantStar solutions.



1108 South High Street, South Bend, Indiana 46601

Telephone: (574)232-3900 Fax: (574)287-5916 Email: info@plantstar.org Web: www.plantstar.org

A Winner in Manufacturing Automation Magazine's 2009 Readers' Choice Poll for SCADA-HMI Vendor

"The availability and use of real-time data is now a driving force for profitability in our manufacturing operations. We've realized that the PlantStar system has earned a place on our shop floor with improvement in both productivity and quality control."

**—Vice President Technology
Contract Injection Molding**

"We've reduced our internal and external corrective action reports by 92.8% by using PlantStar. Major gains in the first-time quality improvements and customer satisfaction, too. An initial savings of \$400,000 was realized in the first five months of implementation."

**—Corporate Vice President
Tier II Automotive Supplier**

"The system gives us a wealth of information. With PlantStar, we set the limits on all of our key process parameters. We have so much confidence in that information that we routinely run "lights-out" on weekends and holidays. We just let the system watch the presses and review the process logs later."

**—Information Systems Manager
Contract Manufacturer**